

# Providence Community Care Center

Michelle James

Chief Nursing Officer

Providence Southwest Washington

Garner Miller

MSG Architects

# 2015 Thurston County Homeless Census

2015 count can be broken down  
into three groups:

- Sheltered 235
- Living in transitional nonpermanent housing 152
- Surviving on the street 192

**Total = 579 homeless in Thurston County**

*\*census conducted by Thurston County, contractor Aaron Rodriguez*

The basic building blocks for healthy living are well known:

- **Food**
- **Shelter**
- **Mental and physical health care**
- **Emotional validation**

... all leading to educational, economic, and job opportunities.

**Providence and partners** are addressing this need, together with a generous community, serving as a catalyst to create a **social services hub.**

# Providence Community Care Center

## Mission

To provide **integrated care to vulnerable people** through compassionate service in a safe environment.

## Vision

We envision a community able to respond to the **needs of marginalized individuals** to ensure those needs are met.

# Partners | Services



Capital Recovery Center

## Housing, shelters



## Mental health



Thurston/Mason

*Funding partners ...*



## Primary care



## Coordination / development



# How does this all work?

- Meet individuals where they are ... bring services that existed in silos together under one roof
- Reduce barriers, help navigate health care and social service systems
- Continue to learn and adapt, using evidence-based practice and client/community feedback
- Safety of clients, staff and community is paramount. We will operate in a manner consistent with trauma-informed care
- Ongoing partnerships with local police and EMS

# Building | Site

## Location:

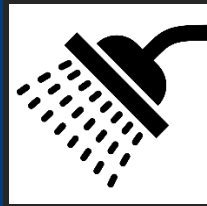
225 State St.  
Olympia, WA 98501



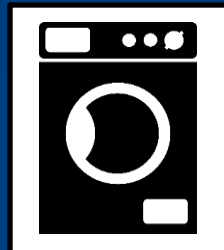
## Planned amenities:



2 exam  
rooms



3 showers



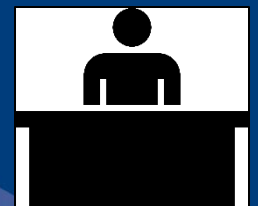
2 washer /  
dryers



5 toilets



WiFi



4 – 1:1  
consult  
rooms

# Governance

**Operations team** – once the center is opened, team will meet daily

**Partner team** – Partner leads meet weekly

**Community Advisory Committee** – meets monthly

**Community meetings** – this is not the first or last!

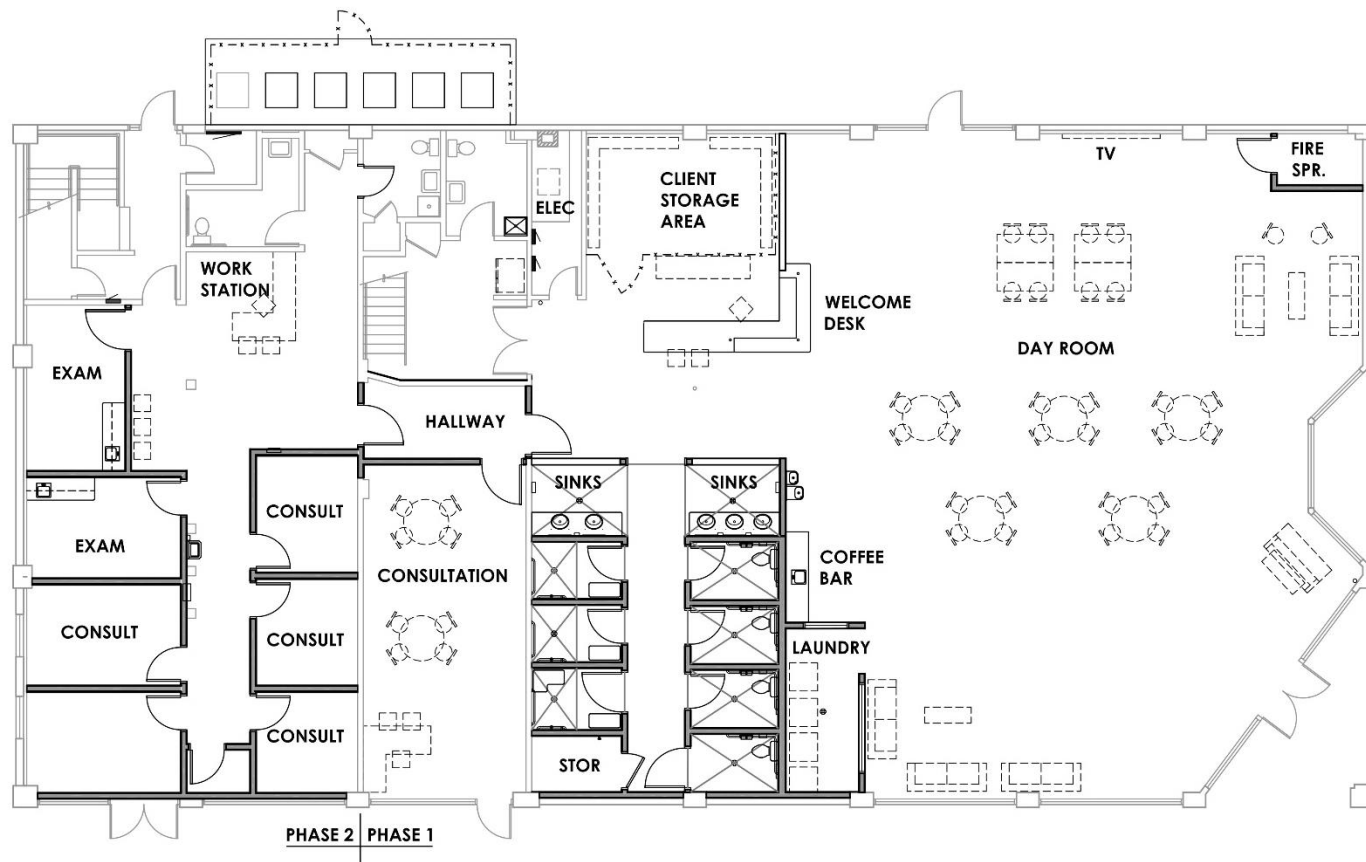
# Providence services

- Short-term (bridge) medication management
- Behavioral health case management
- Mental health risk assessments
- Mental health treatment
- Substance use disorder assessments
- Crisis intervention
- Crisis stabilization

## Partner services

- Home & Community Services - housing, older adult care, senior nutrition, resource support
- Primary care – Olympia Free Clinic & SeaMar
- Behavioral Health Resources - case management - assessments, crisis stabilization
- Connection to - housing, food, clothing, insurance
- Veterans' services
- Dignity services – toilets, showers, laundry
- Job search and resume assistance - computer available
- Peer support

# Proposed floor plan



## Community Care Center - First Floor Plan

Providence Health and Services

msg architects

1/8"=1'-0"

February 29, 2017

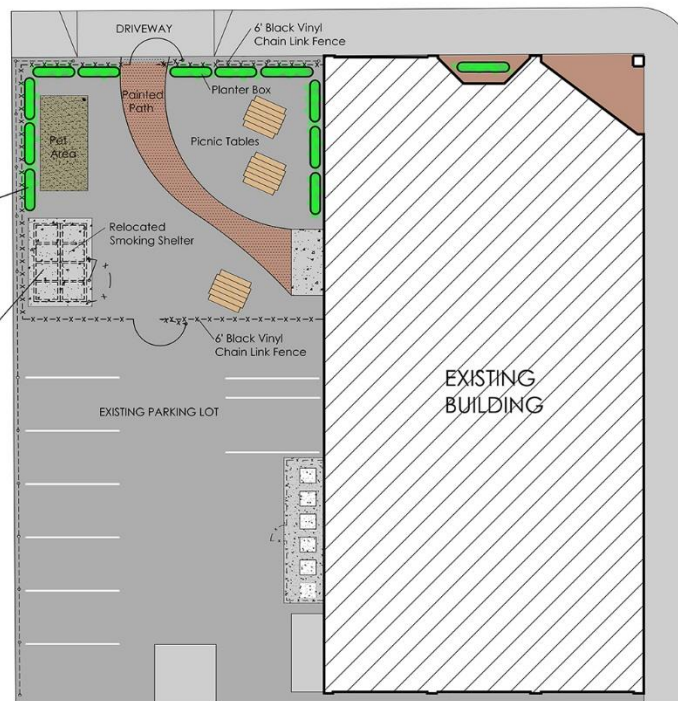
# Proposed outdoor space



EXISTING PARKING LOT



ALLEY



ALLEY

EXISTING PARKING LOT

FRANKLIN STREET NE

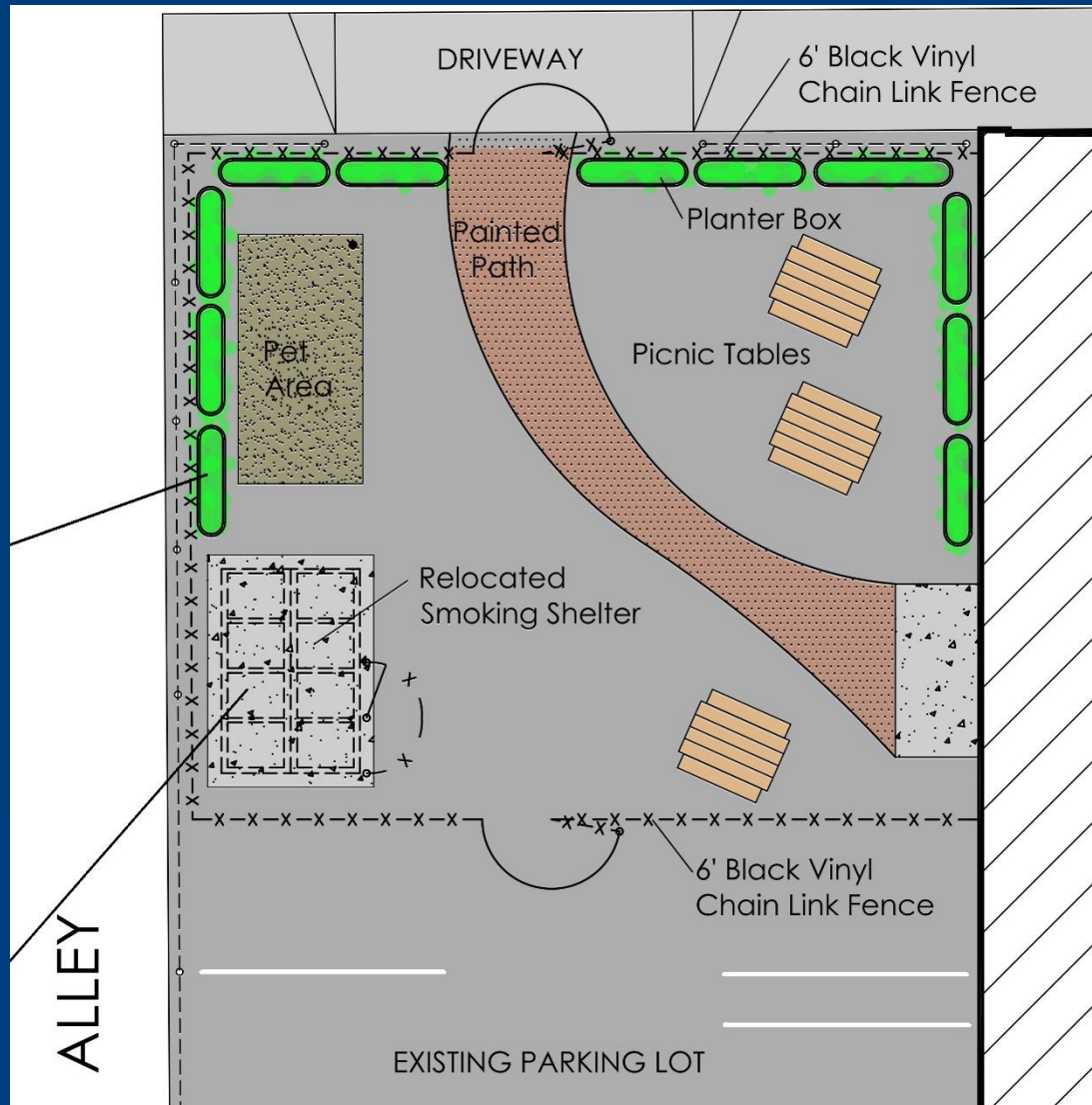
Community Care Center  
Providence Health and Services  
March 1, 2017



**SITE PLAN**  
1:10

msg architects

# Proposed outdoor space



[illegible]

# *Thank you!*

*For more information go to:*

*[www.providence.org/olympiacommunitycarecenter](http://www.providence.org/olympiacommunitycarecenter)*









